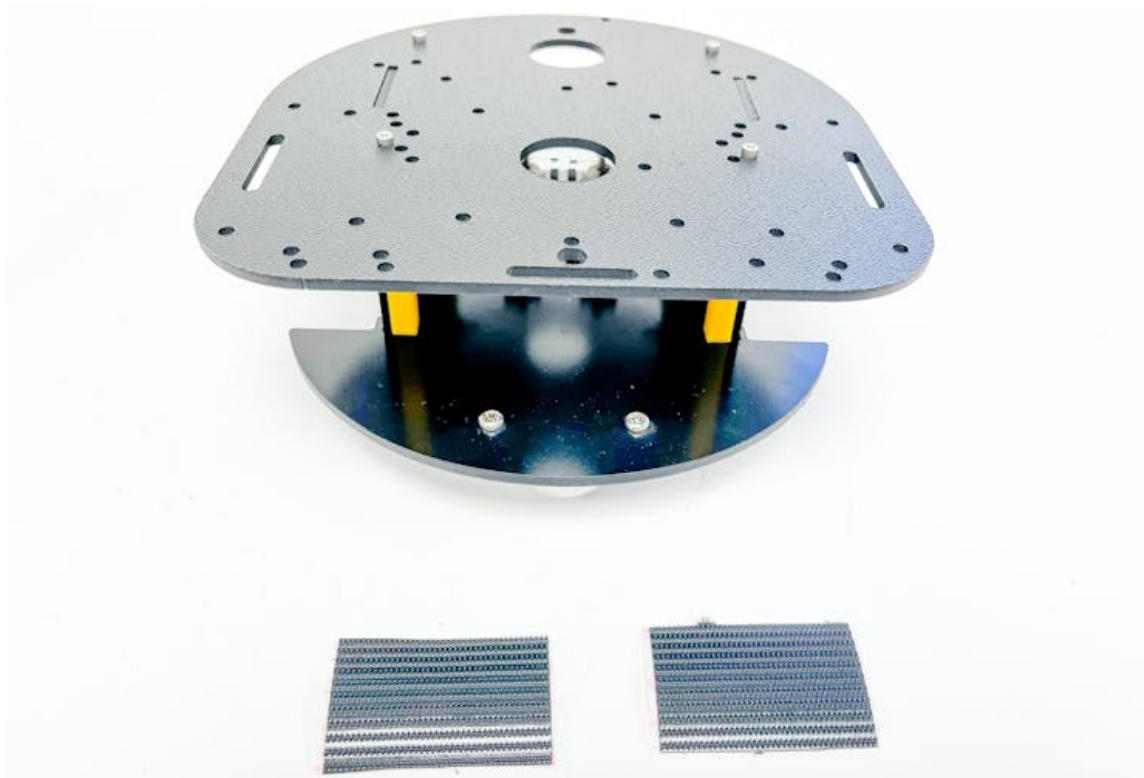
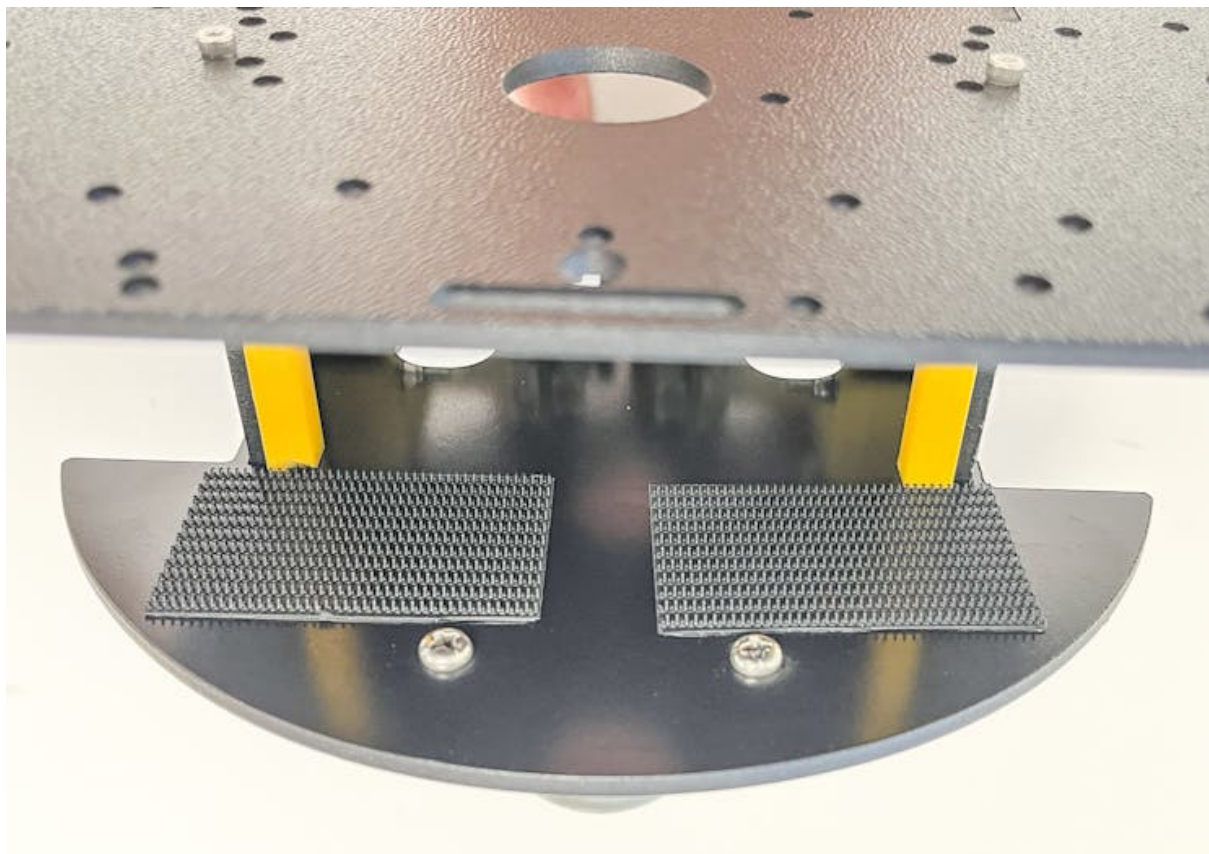


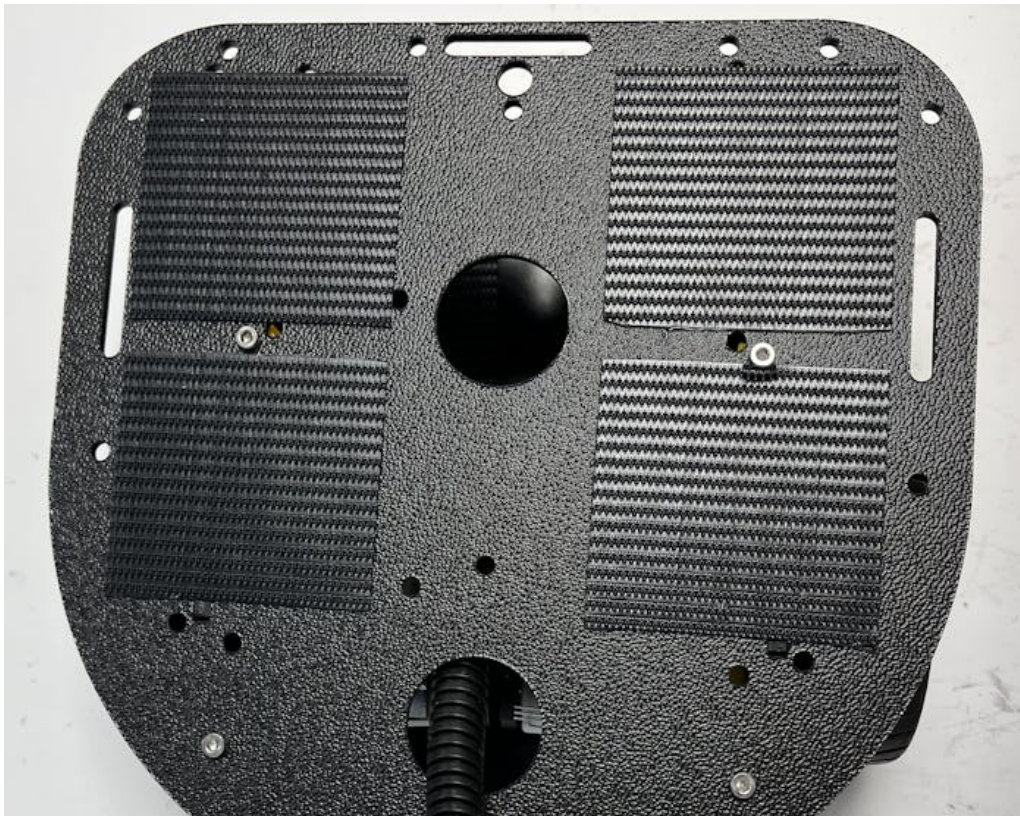
Time to play with Velcro tape! Take chassis and stick two pieces of velcro tape with hooks (rough part the hook) on the bottom plate chassis.



Here it goes.



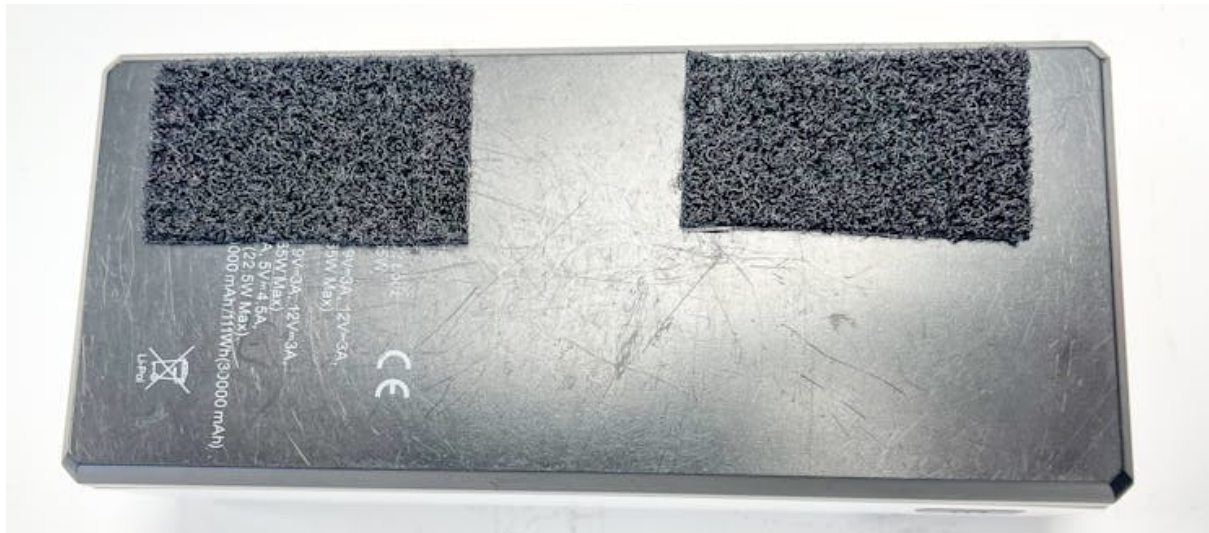
Now stick Velcro tape hooks on the top chassis plate.



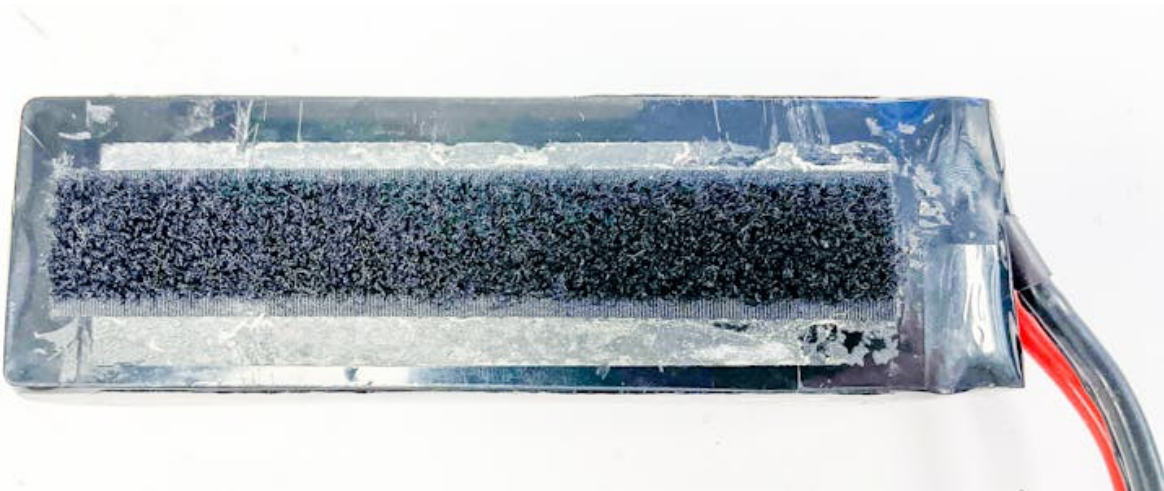
Take Velcro soft side the loop and put it on the bottom side of the power bank.







Now stick a Velcro tape with loops on the 2S-battery bottom side.



Turn it over and stick Velcro tape with hooks on the top side.

